

43+ Meter Truck-Mounted Concrete Boom Pump



- 139 ft Vertical Reach
- Versatile 4-Section Boom
- Fully Integrated Boom Pedestal
- Refined Outriggers for Better Rigidity
- 210 yd³/hr Max Concrete Output
- Free Flow Hydraulics

Boom The Putzmeister 43+ Meter truck-mounted concrete boom pump - mounted on a four-axle chassis - offers the most rigid and versatile 4-section 139 ft boom in its class. Plus, this roll and fold boom's "A" section declines 10° below grade for improved reach capabilities.

Delivery Line The boom is equipped with a 5 inch induction hardened delivery line mounted in easy lift-out brackets for simple delivery line replacement. Standardized elbows and straight pipe sections are used for common component availability and easy replacement.

Pedestal The fully integrated pedestal design of the Putzmeister 43+ absorbs all forces as outriggers and boom are within one structural element. This design results in less twist, reduced forces transferred to the truck frame, a small outrigger footprint, low overall weight and quick setup. The boom pedestal includes a rotation bearing and access openings to simplify changing the turret pipe. It also incorporates the hydraulic oil tank and water tank for improved weight distribution. Triple suction filters with indicator gauges are located in the pedestal for easy access, and a condensation trap is found in the tank to collect water. Two spacious 12'8" (3.86m) long decks allow convenient storage of pipe and hoses.

Outriggers The outriggers have been further refined for increased rigidity, and all functions are fully hydraulic with integral cylinders. The front outriggers swing-out, telescope and extend down while the rear outriggers swing-out and extend down. For extended on-site use, a diesel fuel tank is built into one of the rear outrigger legs and holds up to 130 gallons (490L). Note: One Side Support (OSS) offered as an option.

Remote Controls All boom and pump functions are at the operator's fingertips while utilizing the lightweight remote control box with 130 ft (40m) cable. Fully proportional radio remote controls are optional.

Clean Out A 406 psi (28 bar) hydraulically-driven water pump with a 160 gallon (605L) water tank in the pedestal and an additional 138 gallon (522L) water tank in one of the outrigger legs make clean out easy.

Concrete Pump With the same setup, only Putzmeister has the technology to offer both 210 yd³/hr output and provide 1233 psi concrete pressure with its standard .16H pump (on the rod side). With competitive designs, you have to decide if you want either high pressure or high volume. Key features include a free flow hydraulic system for smooth controllable pumping as well as hard chromed concrete cylinders and automatic lubrication of the concrete pistons for long service life. This pump has a fully adjustable volume control which allows very slow pumping while retaining full concrete pressure and boom speed.

Only Putzmeister Offers You a Choice of Valves...



BSF • S-Valve Hopper RS905
S-Valve 2018 Hard Faced
8" to 7" (200 to 180mm)
Hopper capacity
21.2 cu ft (600L)
Hopper height
50.4" (1280mm)

BRF • C-Valve Hopper RC702
C-Valve B2314
8" to 8" (200 to 140mm)
Hopper capacity
14.1 cu ft (400L)
Hopper height
53.5" (1360mm)



Ask about our new "Big Mouth" valve.

CB 1402-4 US

Specifications

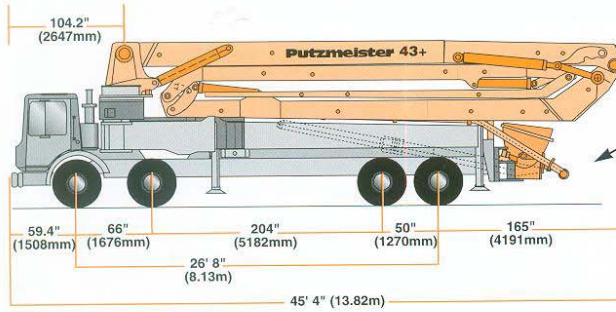
43+ Meter Concrete Pump

Truck-Mounted Specifications

Based on Model MACK MR688S

Length	45' 4"	(13.82m)
Width	8' 2"	(2.50m)
Height	13' 0"	(3.96m)
Wheelbase	295"	(7493mm)
Front axle weight	32,000 lbs	(14,515kg)
Rear axle weight	43,000 lbs	(19,505kg)
Approx total weight	75,000 lbs	(34,020kg)

Weights are approximate and include pump, boom, truck, full hydraulic oil, driver and some fuel. Varies with options selected.
Dimensions will vary with different truck makes, models and specifications.



BSF Model Illustrated

Boom Specifications • Roll and Fold Design

Height & Reach		
Vertical reach	138' 8"	(42.31m)
Horizontal reach	126' 7"	(38.60m)
Reach from front of truck*	118' 0"	(35.95m)
Reach depth	99' 1"	(30.20m)
Unfolding height	35' 2"	(10.70m)

4-Section Boom		
1st section articulation	106°	
2nd section articulation	180°	
3rd section articulation	180°	
4th section articulation	240°	
1st section length	36' 2"	(11.02m)
2nd section length	33' 3"	(10.13m)
3rd section length	29' 10"	(9.12m)
4th section length	27' 4"	(8.33m)

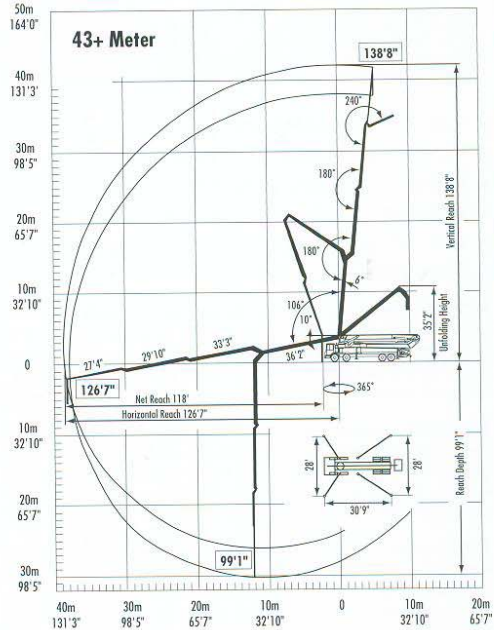
General Specs		
Pipeline size (ID) metric ends with couplings	5" (125mm)	
Rotation	365°	
End hose-length (heavy duty)	13'	(4m)
End hose-diameter	5" (125mm)	
Outrigger spread L-R-front swing-out & telescope	28' 0"	(8.53m)
Outrigger spread L-R-rear swing-out	28' 0"	(8.53m)

Pump Specifications 43+.16H

Output- rod side	210 yd ³ /hr	(160m ³ /hr)
piston side	146 yd ³ /hr	(112m ³ /hr)
Pressure- rod side	1233 psi	(85 bar)
piston side	1885 psi*	(130 bar)*
Concrete cylinder diameter	9"	(230mm)
Stroke length	83"	(2100mm)
Max strokes per minute- rod side	31	
piston side	21	
Volume control	0-Full	
Vibrator	Standard	
Hard chromed concrete cylinders	Standard	
Hydraulic system	Free Flow	
Hydraulic system pressure	5075 psi	(350 bar)
Differential cylinder diameter	5.5"	(140mm)
Rod diameter	3.1"	(80mm)
Maximum size aggregate	2.5"	(63mm)
Water tank - pedestal	160 gal	(605L)
Water tank - outrigger leg	138 gal	(522L)

Maximum theoretical values listed
* Applies to units mounted on PMA stock truck-MACK MR688S
• Standard delivery line system rated at max line pressure of 1233 psi (85 bar)

Right to make technical amendments reserved.



Putzmeister America
1733 90th Street
Sturtevant
Wisconsin 53177 USA

Telephone (414) 886-3200
Facsimile (414) 886-3212
www.putzmeister.com