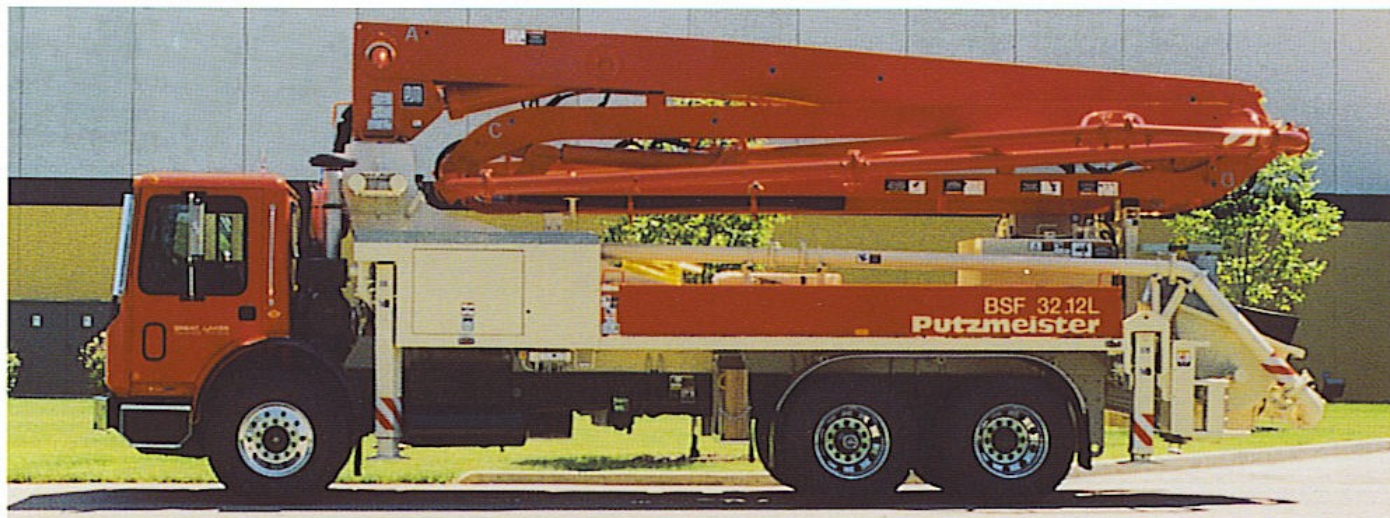


32-Meter Truck-Mounted Concrete Boom Pump



- 105 ft Vertical Reach
- Versatile 4-Section Boom
- Short Length Without Overhang
- Low Overall Unfolding Height
- Fully Hydraulic Diagonal Outriggers
- Free Flow Hydraulics

Boom The Putzmeister 32-Meter truck-mounted concrete boom pump offers the *most compact and versatile 4-section 105 ft boom on the market today*. This 4-section roll and fold boom features a short overall length without overhang for convenient road travel and a low opening height for easy unfolding under low structures.

Delivery Line The boom is equipped with a 5 inch delivery line mounted in easy lift-out brackets for simple delivery line replacement. Standardized elbows and straight pipe sections are used for common component availability and easy replacement.

Pedestal The box-type construction of the pedestal is mounted to the subframe both at its base and via diagonal braces, which serve to spread the load over the largest possible area for better rigidity. The boom pedestal includes a rack and pinion slewing system for reduced maintenance costs and access openings to simplify changing the turret pipe. It also incorporates the hydraulic oil tank for improved weight distribution as well as a tool box for convenience. Triple* suction filters with indicator gauges are located in the pedestal for easy access, and a condensation trap is found in the tank to collect water. Two spacious 13 ft (4m) long decks allow convenient storage of pipe and hoses, while fold down slide panels are available as an option.

Outriggers All outrigger functions are fully hydraulic with integral cylinders. Front outriggers diagonally telescope and extend down, allowing for a smaller outrigger footprint and easier setup in tight areas. Rear outriggers telescope and extend down perpendicular to the truck.

Remote Controls All boom and pump functions are at the operator's fingertips while utilizing the lightweight remote control box with 130 ft (40m) cable. Fully proportional radio remote controls are optional.

Clean Out A 406 psi (28 bar) hydraulically-driven water pump with a 185 gallon (700L) water tank make clean out easy.

Concrete Pump With the same setup, only Putzmeister has the technology to offer both 210 yd³/hr output and provide 1233 psi concrete pressure (on the rod side).* With competitive designs, you have to decide if you want either high pressure or high volume. Key features include a free flow hydraulic system* for smooth controllable pumping as well as hard chromed concrete cylinders and automatic lubrication of the concrete pistons for long service life. This pump has a fully adjustable volume control which allows very slow pumping while retaining full concrete pressure and boom speed.

*Refers to .16H pump. Dependent on the application, the .12L pump (with long stroke cylinder) can handle the job - rated at 152 yd³/hr and 1015 psi concrete pressure (on the rod side).

Only Putzmeister Offers You a Choice of Valves...



BSF • S-Valve Hopper RS905

S-Valve 2018 Hard Faced
8" to 7" (200 to 180mm)
Hopper capacity
21.2 cu ft (600L)
Hopper height
48.0" (1220mm)

BRF • C-Valve Hopper RC702

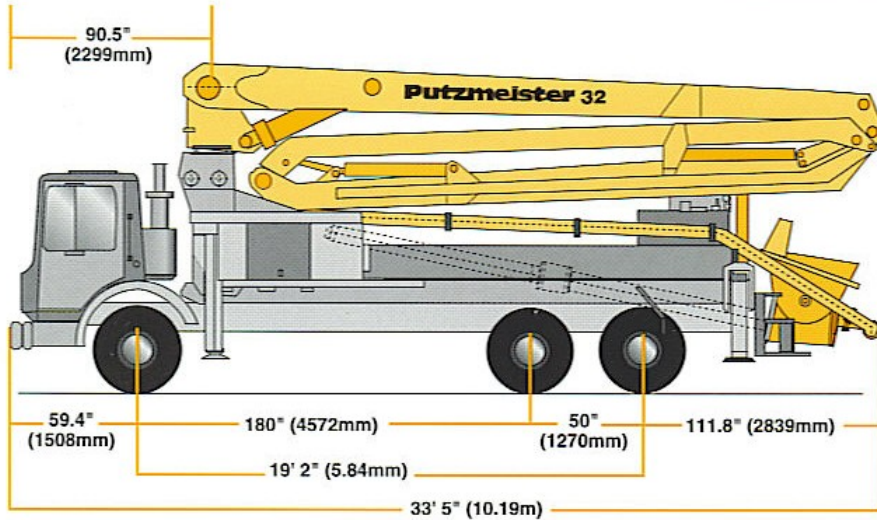
C-Valve B2314
8" to 6" (200 to 140mm)
Hopper capacity
14.1 cu ft (400L)
Hopper height
52.0" (1320mm)



Ask about our new "Big Mouth" valve.

Specifications

32-Meter Concrete Pump



Truck-Mounted Specifications

Based on Model MACK MR688S

Length	33' 5"	(10.19m)
Width	8' 2"	(2.50m)
Height	13' 0"	(3.96m)
Wheelbase	205"	(5207mm)
Front axle weight	19,400 lbs	(8,800kg)
Rear axle weight	33,400 lbs	(15,150kg)
Approx total weight	52,800 lbs	(23,950kg)

Weights are approximate and include pump, boom, truck, full hydraulic oil, driver and some fuel. Varies with options selected.

Dimensions will vary with different truck makes, models and specifications.

BSF Model Illustrated

Boom Specifications • Roll and Fold Design

Height & Reach

Vertical reach	103' 10"	(31.67m)
Horizontal reach	91' 10"	(28.00m)
Reach from front of truck*	84' 4"	(25.69m)
Reach depth	69' 8"	(21.24m)
Unfolding height	24' 10"	(7.60m)

4-Section Boom

1st section articulation	110°	
2nd section articulation	180°	
3rd section articulation	180°	
4th section articulation	270°	
1st section length	25' 4"	(7.70m)
2nd section length	23' 1"	(7.05m)
3rd section length	23' 1"	(7.05m)
4th section length	20' 4"	(6.20m)

General Specs

Pipeline size (ID) metric ends with couplings	5"	(125mm)
Rotation	5.5"	(140mm)
End hose-length (heavy duty)	10'	(3m)
End hose-diameter	5"	(125mm)
Outrigger spread L-R-front telescopic diagonal	20' 4"	(6.20m)
Outrigger spread L-R-rear telescope	13' 2"	(4.00m)

Pump Specifications

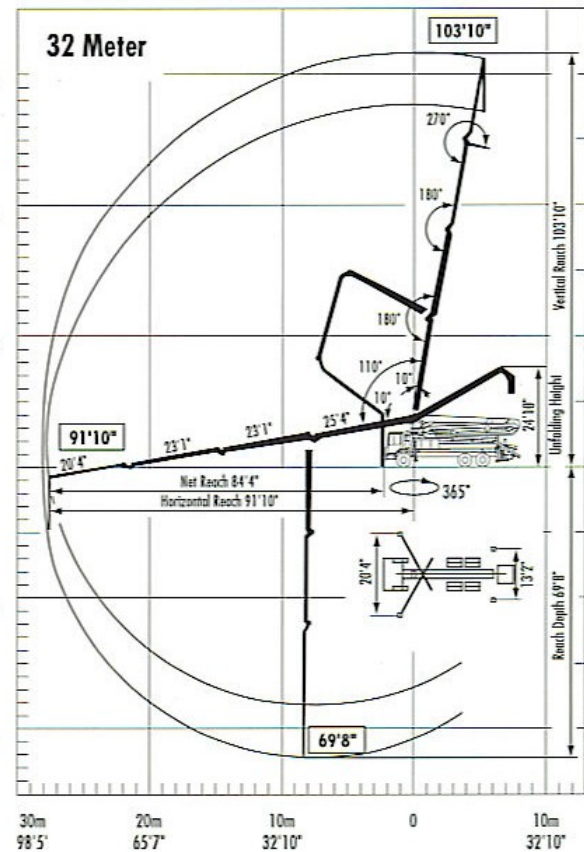
	32.12L	32.16H
Output- rod side	152 yd ³ /hr (116m ³ /hr)	210 yd ³ /hr (160m ³ /hr)
piston side	94 yd ³ /hr (72m ³ /hr)	146 yd ³ /hr (112m ³ /hr)
Pressure- rod side	1015 psi (70 bar)	1233 psi (85 bar)
piston side	1624 psi (112 bar)	1885 psi (130 bar)
Concrete cylinder diameter	9" (230mm)	9" (230mm)
Stroke length	83" (2100mm)	83" (2100mm)
Max strokes per minute- rod side	22	31
piston side	14	21
Volume control	0-Full	0-Full
Vibrator	Standard	Standard
Hard chromed concrete cylinders	Standard	Standard
Hydraulic system	Free Flow	Free Flow
Hydraulic system pressure	5075 psi (350 bar)	5075 psi (350 bar)
Differential cylinder diameter	5.1" (130mm)	5.5" (140mm)
Rod diameter	3.1" (80mm)	3.1" (80mm)
Maximum size aggregate	2.5" (63mm)	2.5" (63mm)
Water Tank	185 gal (700L)	185 gal (700L)

Maximum theoretical values listed.

* Applies to units mounted on PMA stock truck-MACK MR688S

• Standard delivery line system rated at max line pressure of 1233 psi (85 bar)

Right to make technical amendments reserved.



Putzmeister America
1733 90th Street
Sturtevant
Wisconsin 53177 USA

Telephone (414) 886-3200
Facsimile (414) 886-3212
www.putzmeister.com